

Write your name here

Surname

Other names

Pearson
Edexcel GCSE

Centre Number

--	--	--	--	--	--

Candidate Number

--	--	--	--	--	--

History A (The Making of the Modern World)
Unit 3: Modern World Source Enquiry
Option 3B: War and the transformation
of British society, c1931–51

Tuesday 21 June 2016 – Morning
Time: 1 hour 15 minutes

Paper Reference

5HA03/3B

You must have:
Sources Booklet (enclosed)

Total Marks

Instructions

- Use **black** ink or ball-point pen.
- **Fill in the boxes** at the top of this page with your name, centre number and candidate number.
- Answer **all** questions.
- Answer the questions in the spaces provided
– *there may be more space than you need.*

Information

- The total mark for this paper is 53.
- The marks for **each** question are shown in brackets
– *use this as a guide as to how much time to spend on each question.*
- Questions labelled with an **asterisk** (*) are ones where the quality of your written communication will be assessed
– *you should take particular care on these questions with your spelling, punctuation and grammar, as well as the clarity of expression.*
- The marks available for spelling, punctuation and grammar are clearly indicated.

Advice

- Read each question carefully before you start to answer it.
- Try to answer every question.
- Check your answers if you have time at the end.

Turn over ►

P43896A

©2016 Pearson Education Ltd.

1/1



PEARSON

DO NOT WRITE IN THIS AREA

DO NOT WRITE IN THIS AREA

DO NOT WRITE IN THIS AREA

Handwriting practice area with 20 horizontal dotted lines.

(Total for Question 1 = 6 marks)



2 Study Source B and use your own knowledge.

What was the purpose of this representation?

Use details of the cartoon and your own knowledge to explain your answer.

(8)

Area with horizontal dotted lines for writing the answer.

DO NOT WRITE IN THIS AREA

DO NOT WRITE IN THIS AREA

DO NOT WRITE IN THIS AREA



DO NOT WRITE IN THIS AREA

DO NOT WRITE IN THIS AREA

DO NOT WRITE IN THIS AREA

Handwriting practice area with 20 horizontal dotted lines.

(Total for Question 2 = 8 marks)



3 Study Source C and use your own knowledge.

Use Source C and your own knowledge to explain why there was a march from Jarrow to London in 1936.

(10)

Area with horizontal dotted lines for writing.

DO NOT WRITE IN THIS AREA

DO NOT WRITE IN THIS AREA

DO NOT WRITE IN THIS AREA



DO NOT WRITE IN THIS AREA

DO NOT WRITE IN THIS AREA

DO NOT WRITE IN THIS AREA

Handwriting practice area with 20 horizontal dotted lines.



DO NOT WRITE IN THIS AREA

DO NOT WRITE IN THIS AREA

DO NOT WRITE IN THIS AREA

(Total for Question 3 = 10 marks)



DO NOT WRITE IN THIS AREA

DO NOT WRITE IN THIS AREA

DO NOT WRITE IN THIS AREA

4 Study Sources D and E and use your own knowledge.

How reliable are Sources D and E as evidence of the effects of unemployment in Britain in the 1930s?

Explain your answer, using Sources D and E and your own knowledge.

(10)

Area with horizontal dotted lines for writing the answer.



DO NOT WRITE IN THIS AREA

DO NOT WRITE IN THIS AREA

DO NOT WRITE IN THIS AREA

Handwriting practice area with 20 horizontal dotted lines.



DO NOT WRITE IN THIS AREA

DO NOT WRITE IN THIS AREA

DO NOT WRITE IN THIS AREA

Handwriting practice area with 25 horizontal dotted lines.

(Total for Question 4 = 10 marks)



P 4 3 8 9 6 A 0 1 1 1 6

DO NOT WRITE IN THIS AREA

DO NOT WRITE IN THIS AREA

DO NOT WRITE IN THIS AREA

Handwriting practice area with 20 horizontal dotted lines.



DO NOT WRITE IN THIS AREA

DO NOT WRITE IN THIS AREA

DO NOT WRITE IN THIS AREA

Handwriting practice area with 20 horizontal dotted lines.



DO NOT WRITE IN THIS AREA

DO NOT WRITE IN THIS AREA

DO NOT WRITE IN THIS AREA

Handwriting practice area with 20 horizontal dotted lines.

(Total for spelling, punctuation and grammar = 3 marks)

(Total for Question 5 = 19 marks)

TOTAL FOR PAPER = 53 MARKS



P 4 3 8 9 6 A 0 1 5 1 6

DO NOT WRITE IN THIS AREA

DO NOT WRITE IN THIS AREA

DO NOT WRITE IN THIS AREA

BLANK PAGE



Pearson Edexcel GCSE

History A (The Making of the Modern World)

Unit 3: Modern World Source Enquiry

Option 3B: War and the transformation of British society, c1931–51

Tuesday 21 June 2016 – Morning

Sources Booklet

Paper Reference

5HA03/3B

Do not return this Sources Booklet with the question paper.

Turn over ►

P43896A

©2016 Pearson Education Ltd.

1/1



P 4 3 8 9 6 A

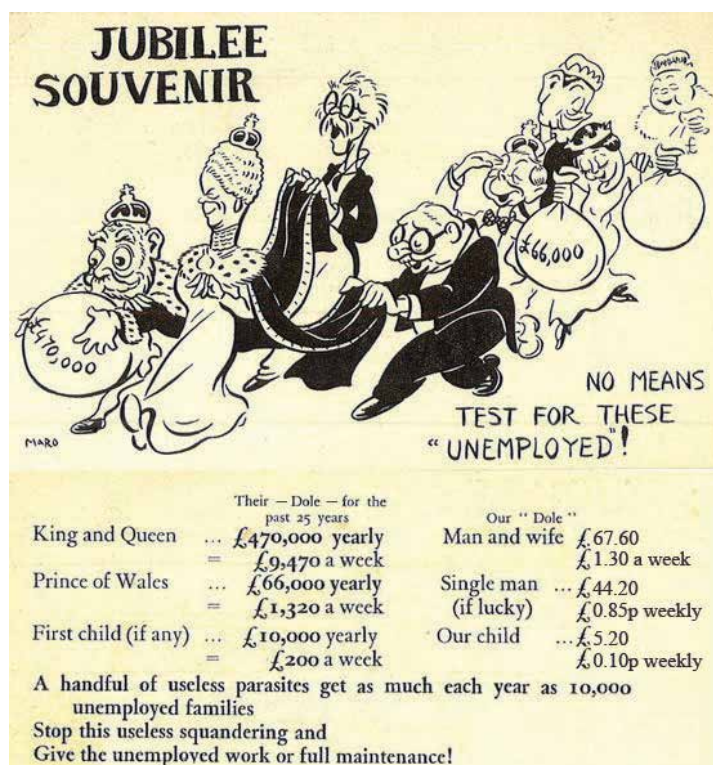
PEARSON

Historical Enquiry: The impact of the Depression, 1931–39

Source A: From an article in the British magazine, *The Spectator*, published in 1937. In the 1930s, the magazine raised money to help the unemployed.

Much has been done by the Special Areas Act. So far, the Government has agreed to give £5 million to the Special Areas. In addition, the Government has given orders, particularly for armaments, to firms in the Special Areas. These orders were worth £24 million. As a result of these Government actions, and partly because of a revival in trade, the number of unemployed in the Special Areas has fallen by 26 per cent in just over two years.

Source B: A cartoon published in 1935 by the National Unemployed Workers' Movement (NUWM). 1935 was the year of the Silver Jubilee that celebrated King George V's twenty-five years as King.



Source C: From a message sent between two governmental departments, 6 October 1936.

A march has been organised to make the Government aware of the unemployment position in the town of Jarrow. The marchers hope that by this means the position of Jarrow will get wide publicity and win the sympathy of the general public. Most of these men were formerly employed in Palmer's Shipyard, which closed down in 1934.

Source D: A photograph published in a British national newspaper in 1936. It shows unemployed men standing on a street corner.



Source E: From an interview given by a medical officer of health in 1935. He gave the interview to the Pilgrim Trust, a charity organisation.

I know of many examples of men who had been apparently healthy when in work, but who had 'gone to pieces' after being unemployed for several years. For example:

- (i) Man, single, aged 40. In normal health until unemployed. After four years of unemployment complained of choking and pain in the head. Specialist suggested psychological problems.
- (ii) Man, married (with family) aged 50. In normal health until unemployed. Developed constant aches and pains in the head. Suffering from serious tiredness.

Source F: From a history textbook, published in 1994.

The National Government, which came into power in 1931, did little to help with the problem of unemployment in the 1930s. It did not believe that government spending would reduce unemployment. Instead, it reduced spending, especially on unemployment benefit, with the introduction of the hated Means Test. The Special Areas Act of 1934 was 'too little too late'. However, the National Government tried to prevent further unemployment and protect British industry, by putting taxes on foreign goods. In addition, the Special Areas Act provided some work in the areas worst affected by unemployment.

BLANK PAGE

Every effort has been made to contact copyright holders to obtain their permission for the use of copyright material. Pearson Education Ltd. will, if notified, be happy to rectify any errors or omissions and include any such rectifications in future editions.